



dinas
kebudayaan



LAYOUT AND TECHNICAL
SPESIFICATION

TEATER BESAR



UP PUSAT KESENIAN JAKARTA
TAMAN ISMAIL MARZUKI
Jl. Cikini Raya No. 73 Jakarta Pusat





General Information: Maximum Capacity 1200 seat

Loading Dock:

Door Location : Upstage Left

Door Demension : 10m H) x 3.5m (W)

Parking Area : Basement 1 & Basement 2 (400 cars)

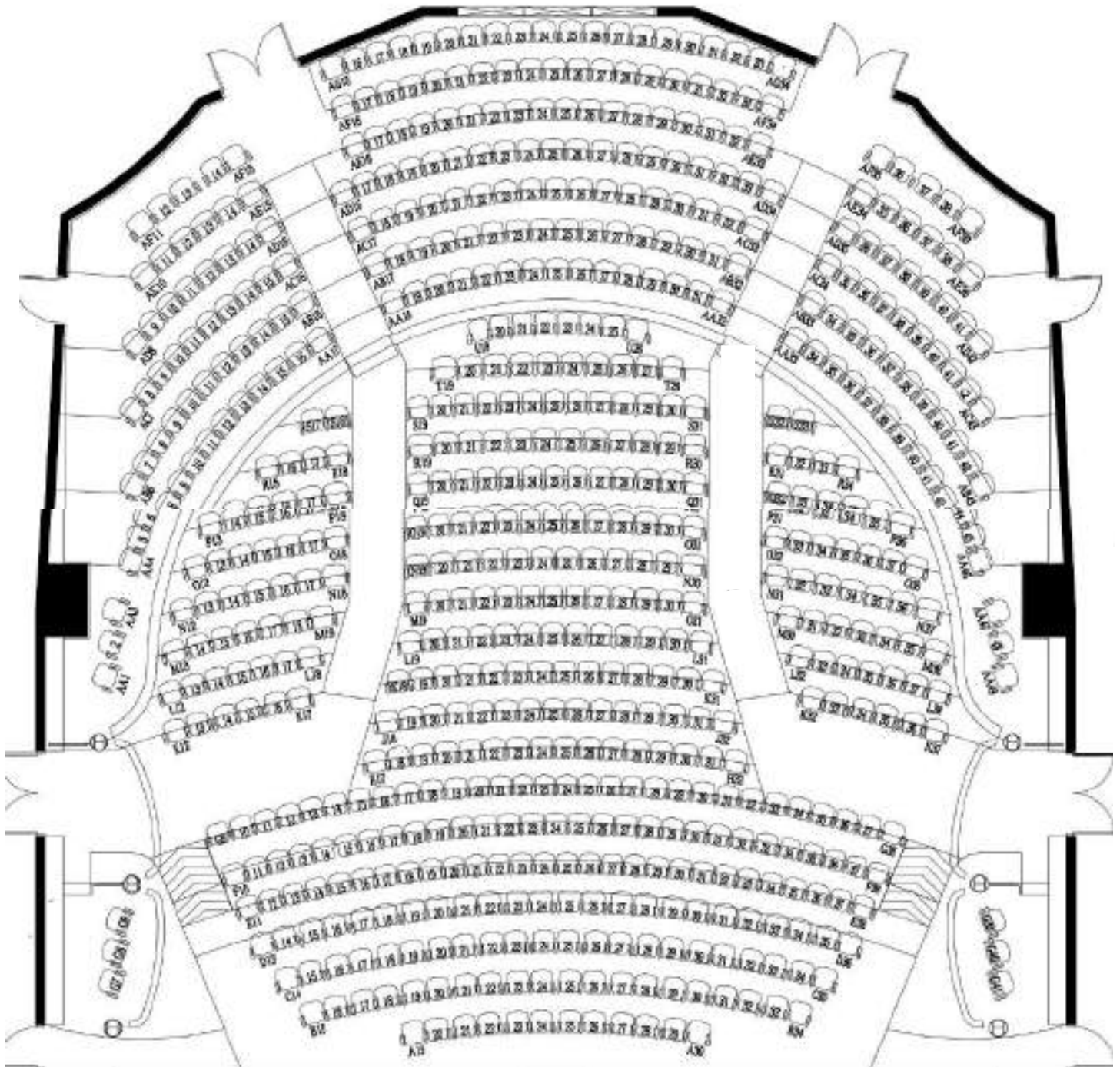
STAGE SPESIFICATION

Proscenium	11 to 16 (W) x 10 (H) mtr
• Stage Deph (Plaster)	20 mtr
• Stage Deph from front border to backdrop	13.5 mtr
• Stage to Grid	24 (H) mtr
• Left Wing Dimension	15 (W) x 15 (D) mtr
• Righ Wing Dimension	5 (W) x 15 (D) mtr

SEATING LAYOUT

Nama Gedung : Teater Besar

LANTAI I (675 Kursi)

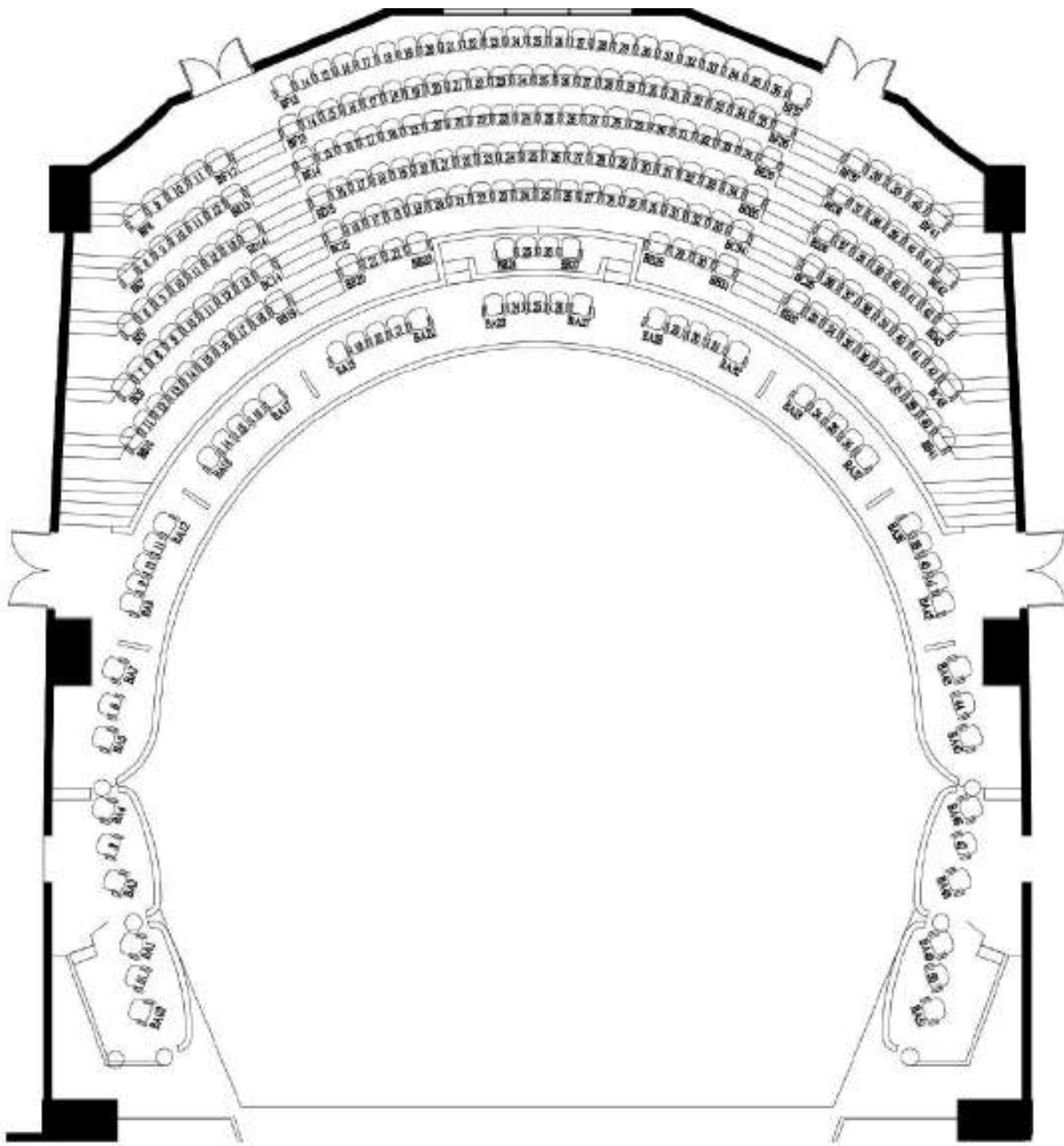


PANGGUNG

SEATING LAYOUT

Nama Gedung : Teater Besar

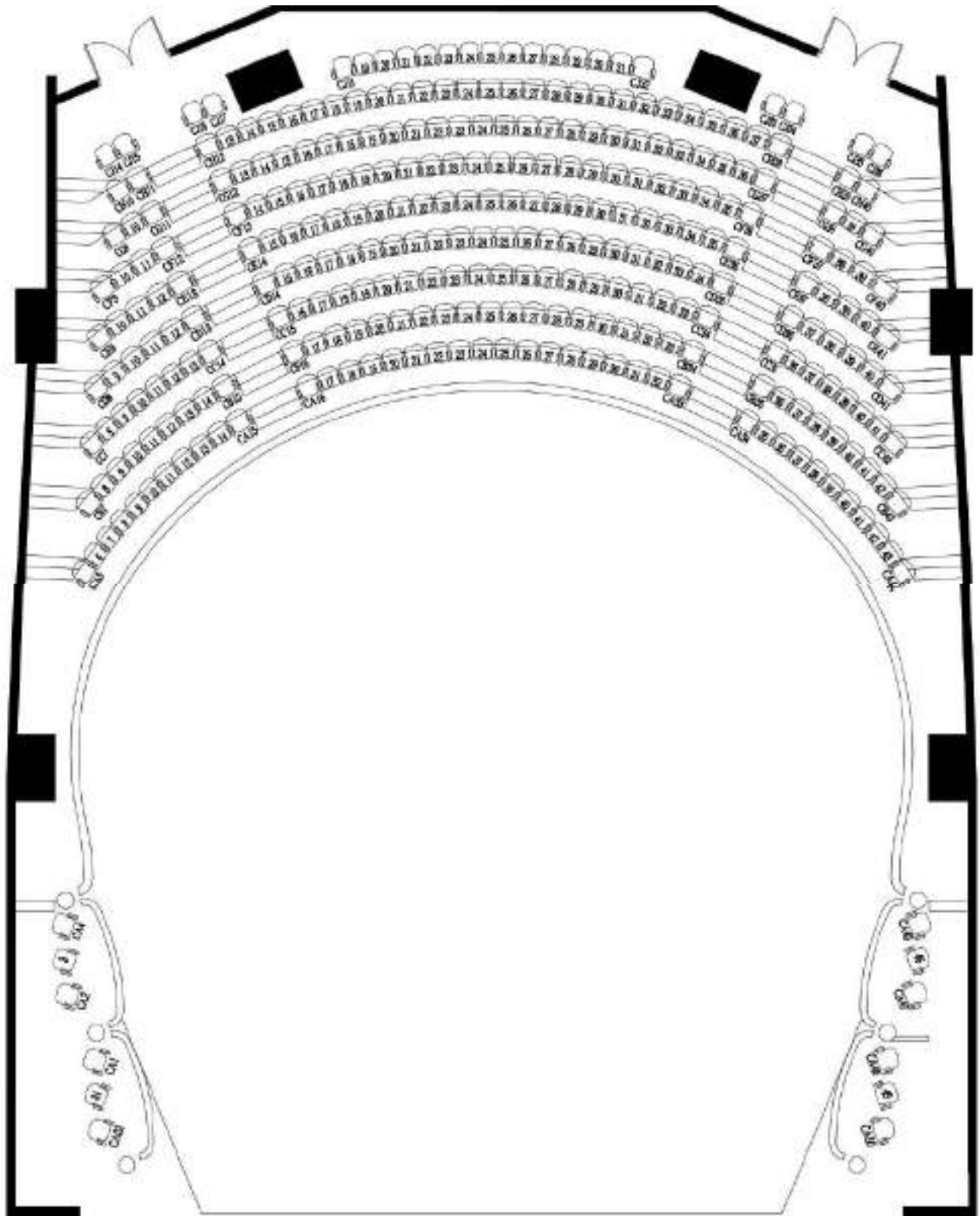
LANTAI II (255 Kursi)



SEATING LAYOUT

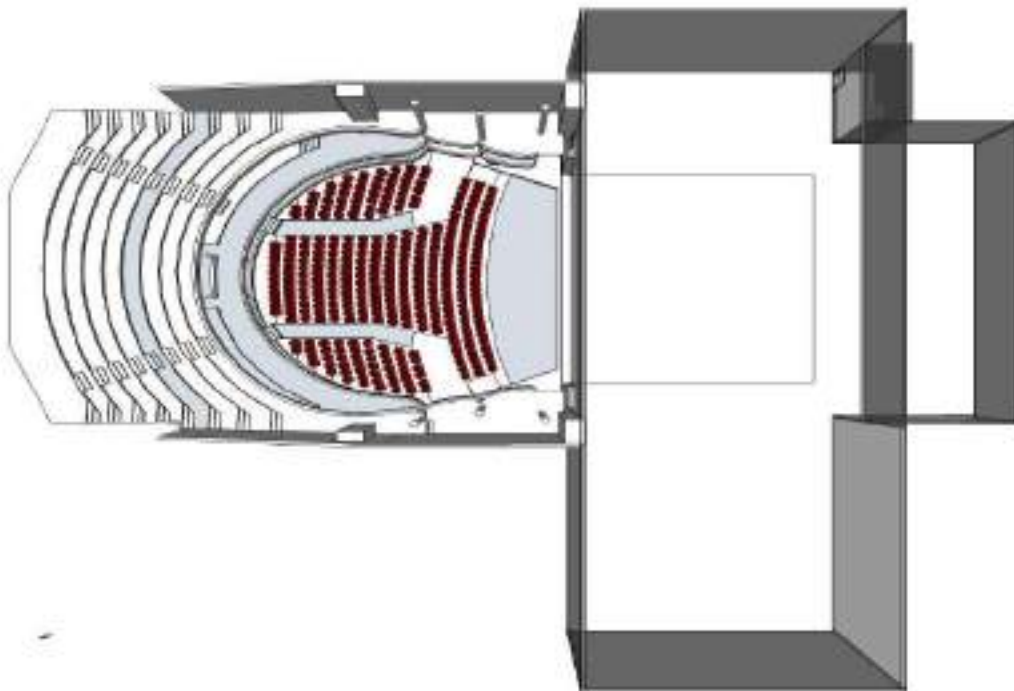
Nama Gedung : Teater Besar

LANTAI III (310 Kursi)



SEATING LAYOUT

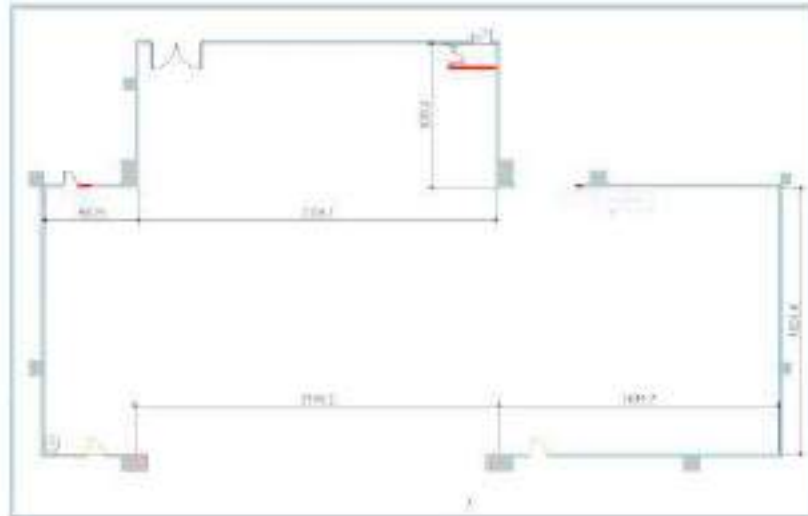
Nama Gedung : Teater Besar



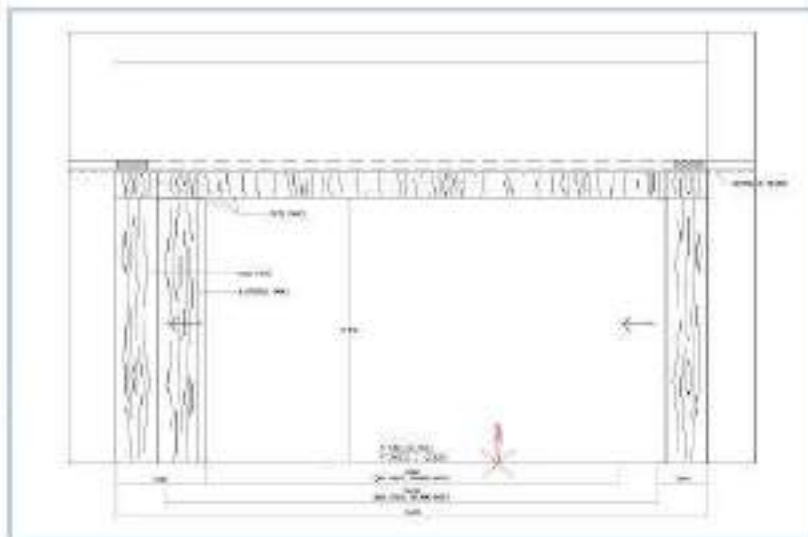
STAGE LAYOUT

Nama Gedung : Teater Besar

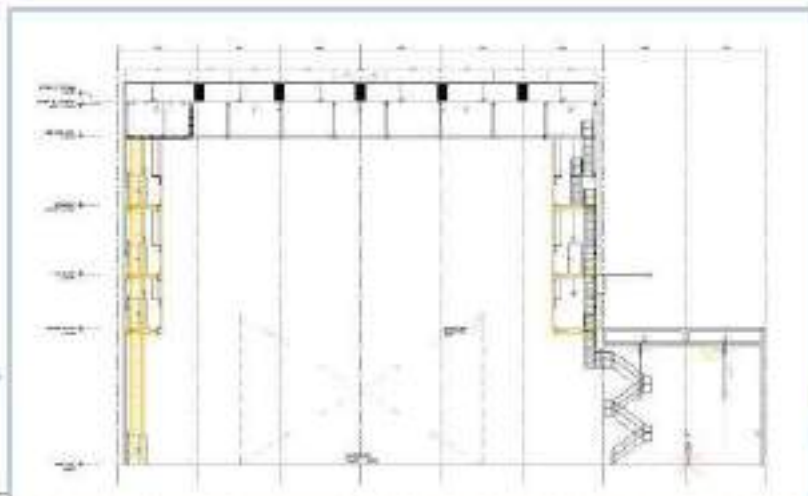
DENAH PANGGUNG
TAMPAK ATAS



ADJUSTABLE
PROSCENIUM



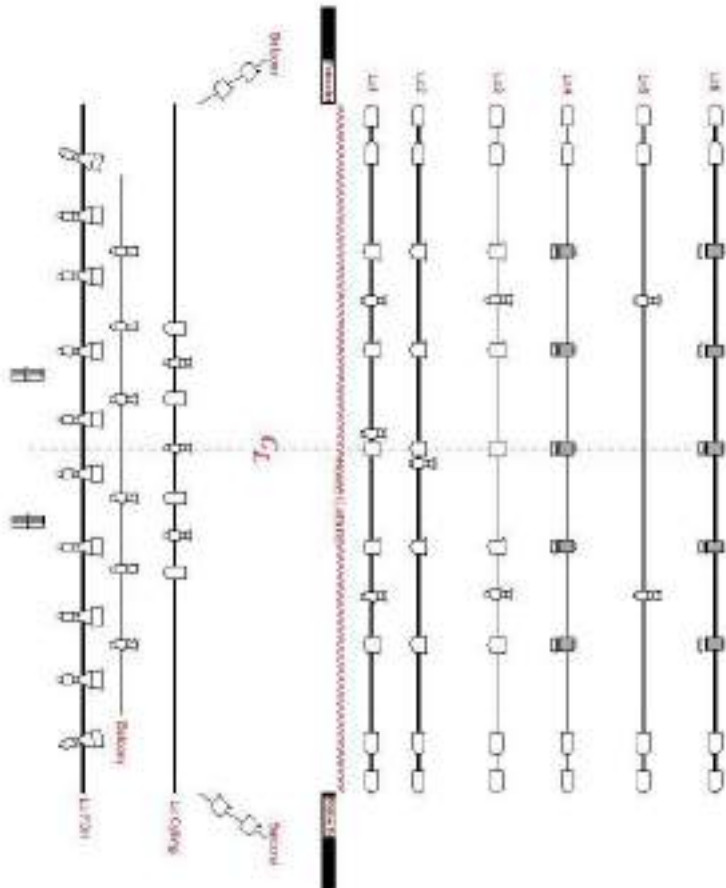
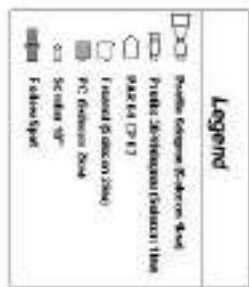
DENAH PANGGUNG
TAMPAK DEPAN



LIGHTPLOT

Nama Gedung : Teater Besar

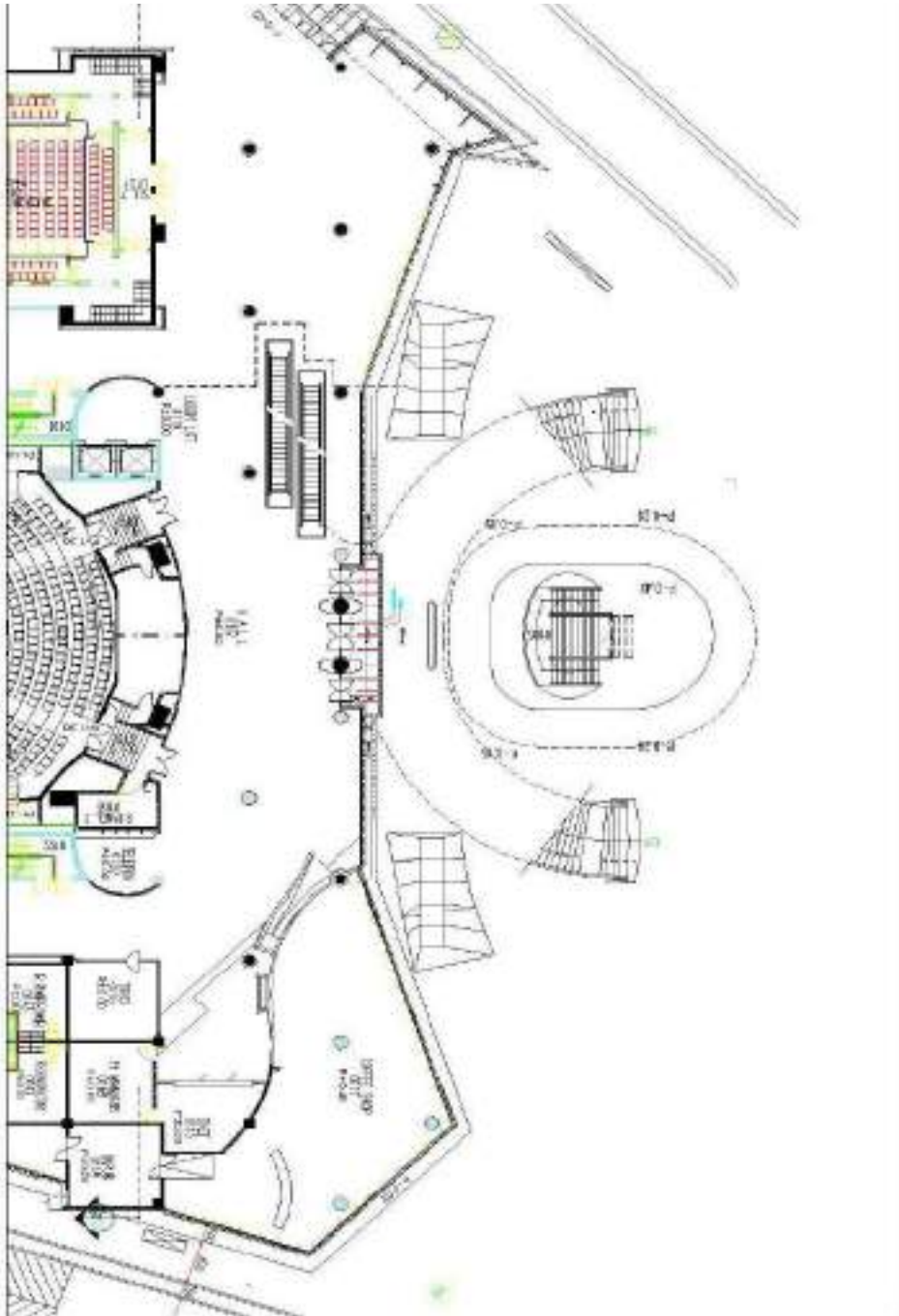
Lightplot Gedung Teater Jakarta UPP POLITIM



LOBBY LAYOUT

Nama Gedung : Teater Besar

LOBBY LANTAI 1

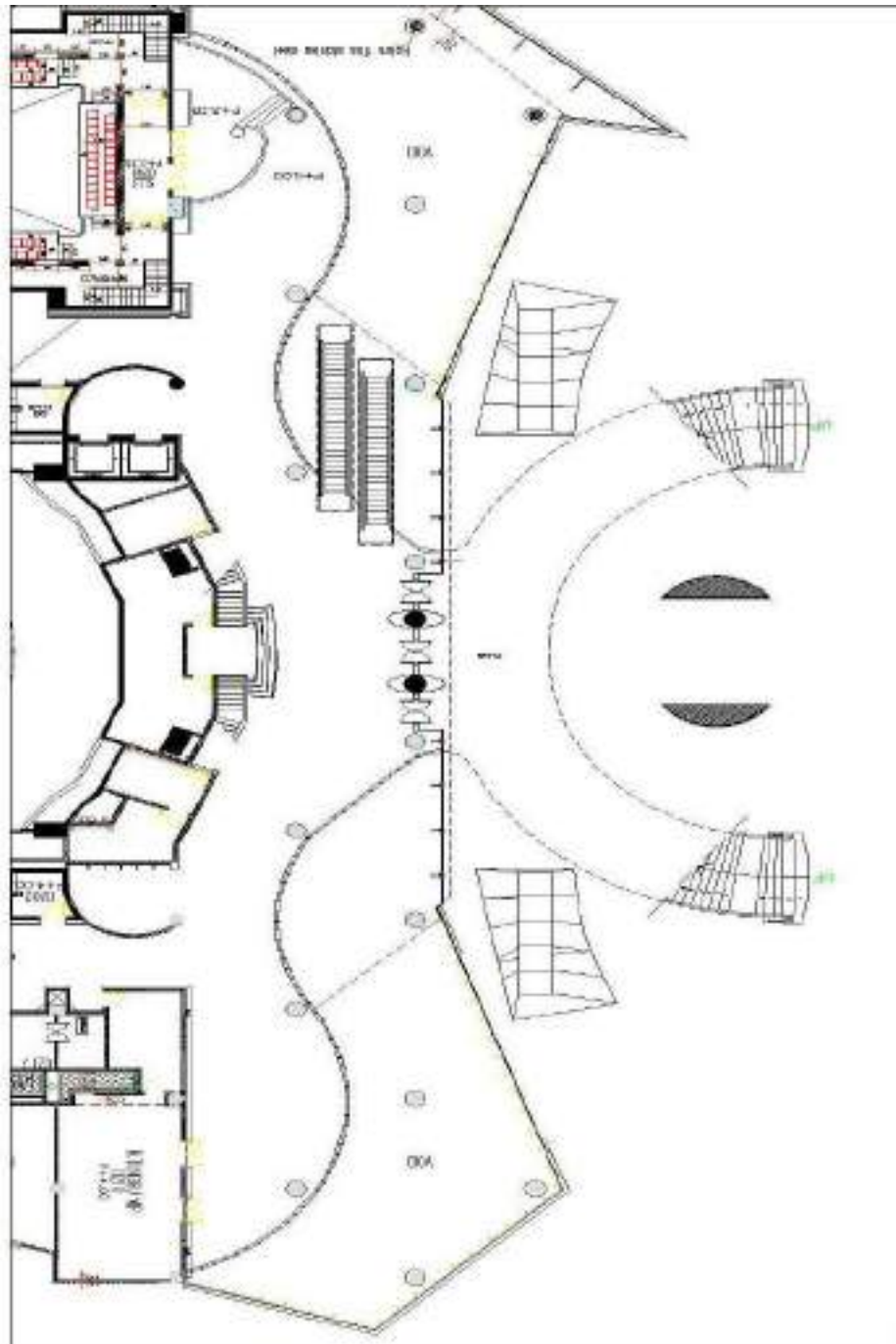


DENAH AUDITORIUM

Nama Gedung : Teater Besar – Teater Jakarta

Update Terakhir : September 2017

LOBBY LANTAI 2

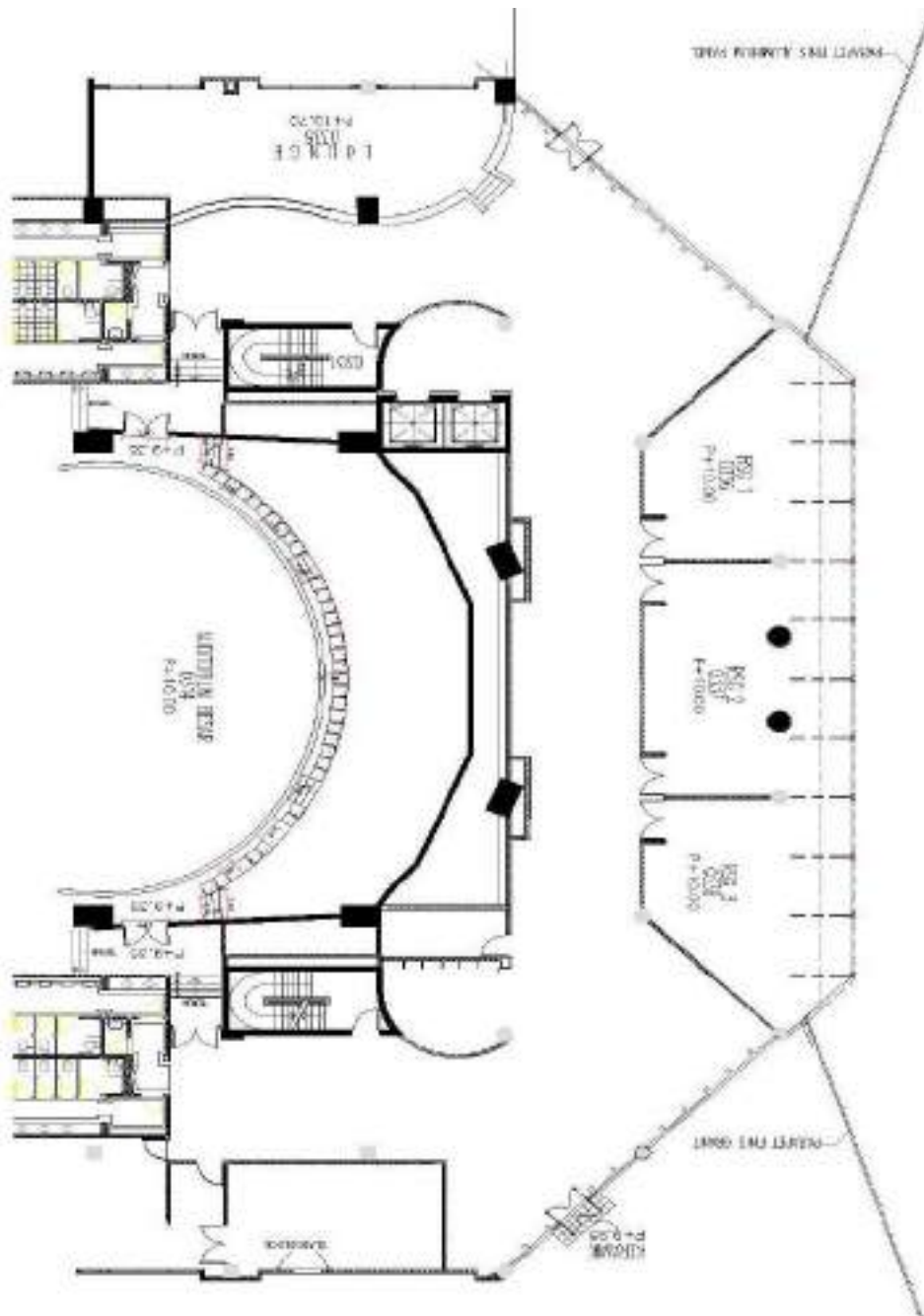


DENAH AUDITORIUM

Nama Gedung : Teater Besar – Teater Jakarta

Update Terakhir : September 2017

LOBBY LANTAI 1



DRESSING ROOMS (11 Rooms)

Each is equipped with Make Up station and table, full length mirrors, wardrobe cabin, speaker station

- On level B1 (under stage level)
 - 1 nos. Dressing room can accommodate up to 13 persons
- On level 1 (stage level)
 - 4 nos. Dressing room can accommodate up to 2 persons
 - 4 nos. Dressing room can accommodate up to 4 persons
- On level 2
 - 2 nos. Dressing room can accommodate up to 14 persons

RAHEARSAL ROOM

- 2 nos. Rehearsal room on level B1
- 1 nos. Rehearsal room on level 4

DRAPERIES

- Front Border : Irish Color, gold fringe 20 (W) x 6 (H) mtr
- House Curtain : Irish Color, gold fringe 23,6 (W) x 12 (H) mtr
- Valance Curtain : Flat Survace, black 20 (W) x 12 (H) mtr
- Legs Curtain : Black, swen flat : 5 batten 3 (W) x 12 (H) mtr
- Top Border : Black, swen flat : 6 batten 20 (W) x 3 (H) mtr
- Scrim : Black Sharkstooth : 1 batten 20 (W) x 12 (H) mtr
- Scrim : White Sharkstooth : 1 batten 20 (W) x 12 (H) mtr
- Mid Stage Curtain : center split, 50% fullness : 1 batten 20.6 (W) x 12 (H) mtr
- Back Drop Curtain : Black, swen flat : 1 batten 20 (W) x 12 (H) mtr
- Rear & Front Cyclorama Screen : 1 batten 20 (W) x 12 (H) mt

LIGHTING

Digital Lighting Control System : Frog 2 Lighting Control, Zero 88

Production Dimmer System :

- Chilli Pro 24 x 10 A (240 channels)
- Chilli Pro 6 x 25 A (24 channels)

Standart Lighting Equipment :

- Fresnel 2kw (Arena HP, Selecon) : 15unit
- PC 2kw (Arena HP, Selecon) : 10unit
- Par 64 Multi Purpose / 1kw (Eclips) : 24unit
- 5 degree HE Fixed Beam / 1kw (Pasific, Selecon) (can't move) : 10unit
- Fixed Beam 30 / 40 degree /1kw (Aurora, Selecon) : 8unit

Price List Outside the Standard Lighting Equipment :

Rigging / Batten :

- Batten Length : 20 – 22 mtr
- Available Maximum Capacity : 300kg/ea

SOUND AUDIO VISUAL

Standart Sound Equipment

Auditorium System

- EV Line Array Left X2-212/120 : 16 unit
- EV Line Array Right X2-212/120 : 16 unit
- EV Subwoofer Left X12-128 : 4 unit
- EV Subwoofer Right X12-128 : 4 unit
- TOA 2 ways speaker Z-240G : 8 unit
- EV IPX 20:4 Power Amplifier for Subwoofer speaker : 2 unit
- TOA Power Amplifier DA-250F for Delay speaker : 4 unit
- TOA Digital Processor DP-0206 : 1 unit

Portable Stage Loudspeaker System

- EV Stage Side Fill left speaker ETK-35P : 1 unit
- EV Stage Side Fill Right speaker ETK-35P : 1 unit
- EV Stage Side Fill Subwoofer Lift ETX-18 SP : 1 unit
- EV Stage Side Fill Subwoofer Right ETX-18 SP : 1 unit

Sound Mixing Console

- Yamaha CSD-R7 : 1 unit
- RPi622 Input 80 Output 16 : 1 unit
- SWP1-8 : 6 unit

Microphones

- Microphone Electro-Voice PL24S :6unit
- Shure Instrument cardioids microphone SM-57 : 4unit
- Shure ULXD2/KSM9 Hand-held Wireless Microphone: 2un

PIPE SCHEDULE

Line Set	Type	Distance
#1	Valance Border	0.90
#2		1.20
#3	House Curtain	1.50
#4 (error)		1.80
#5	Border	2.65
#6	1 st Lighting Bar	3.00
#7		3.30
#8 (error)		3.60
#9	Border	3.90
#10	2 nd Lighting Bar	4.20
#11		4.55
#12 (error)		4.85
#13		5.15
#14	Border	5.45
#15	3 rd Lighting Bar	6.25
#16		6.65
#17		6.95
#18 (error)		7.25
#19 (error)	Mid Stage Traveler	7.55
#20		7.85
#21	Border	8.15
#22	4 th Lighting Bar	8.45
#23		8.75
#24		9.10
#25		10.00
#26	Border	10.30
#27	5 th Lighting Bar	10.60
#28		10.90
#29		11.20
#30		11.50

#31		11.80
#32		12.10
#33 (no macine)	Border	12.40
#34	6 th Lighting Bar	12.70
#35		13.70
#36		14.00
#37		14.30